

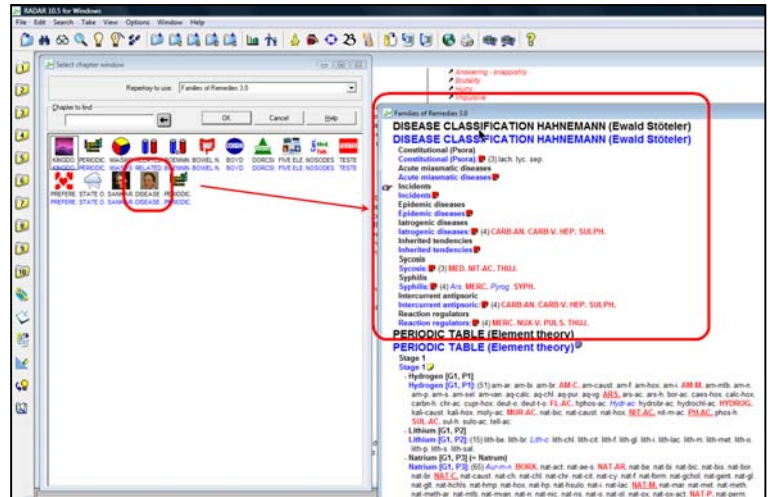
# Disease Classification Groups Hahnemann

Ewald Stöteler

29 Jan 2010

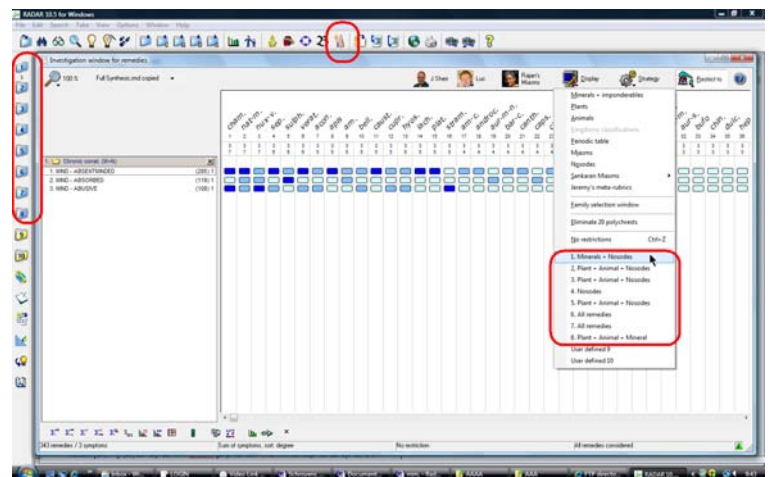
In Radar 10.5 you will find a new ‘Repertory of Families’ with all the ‘grouping’ of remedies.  
(You can open this families repertory via: File, then Open Repertory)

In this repertory you find a chapter with the [Disease classification of Hahnemann groups](#), where also the remedies are mentioned which are ‘exceptions’ to the standard kingdoms-families grouping.



When you activate “Ewald’s module” the symptom clipboards will have the names of the disease classification.  
(You can read more about this elsewhere).

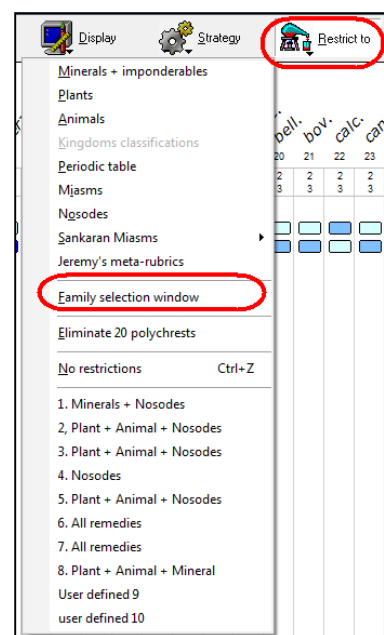
In the analysis window via the button **Restrict To** you can have remedies belonging to a certain group become highlighted.



For example for clipboard 1 (the first personal definable option) the combination: ‘**Minerals + Nosodes**’.

But the few exception remedies are not added yet because these are specific for the disease classification.

You can add these exception remedies to these groups as follows:



From the menu **Restrict To** you need to select the option: **Family selection window** to define (to adapt) the user-definable menu options.

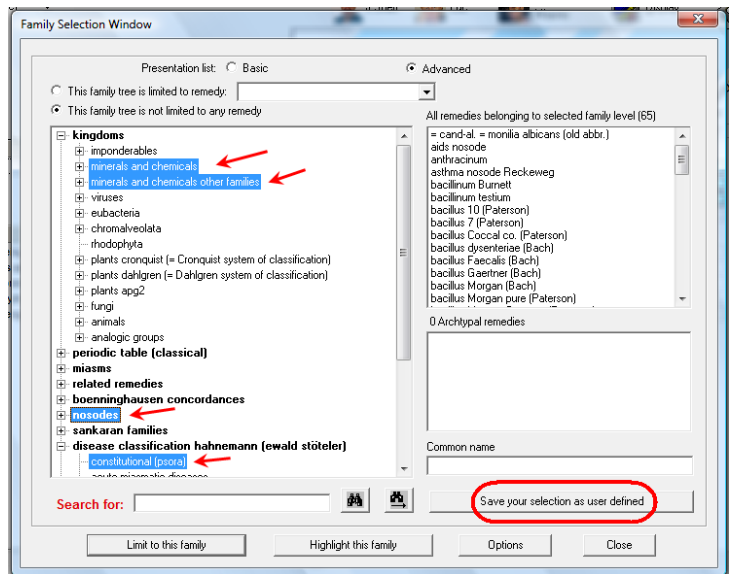
- Click on: **Family selection window**

With **Ctrl + click** you can select more than one item from the list, with all the families groups.

For the **Constitutional - Psora** clipboard you need to select: **Minerals + Nosodes + from the chapter disease classification the group Constitutional (Psora)**.

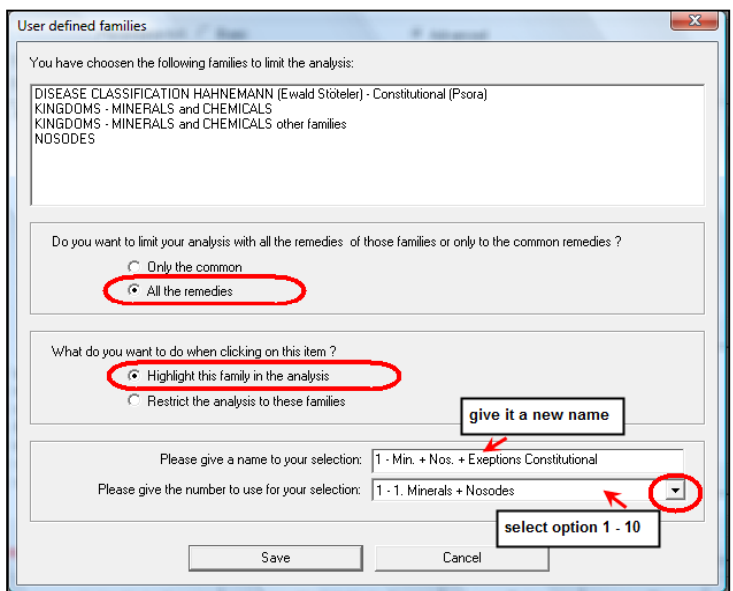
**TIP:** if the group ‘**disease classification Hahnemann**’ is not visible in the ‘default’ list, then use the button **Options** to add it.

After selecting the family-groups you want, then click on the button... **‘Save selection as user defined’**.



In the next window you need to select the following options and save it as one of the users definable numbers 1 - 10.

- Select ‘**All Remedies**’
- Select ‘**Highlight this family**’
- Select one of the 10 user definable numbers (current name will be shown).
- Then you can give a new name, which you prefer.
- Then: Save



For the clipboard Constitutional you could give the first user definable option the following name: **Clipb 1 Min + Nos + Const exp.**

### Applying the Restrict to

With one click you can apply the newly created option, and have all the remedies highlighted to which you need to focus for that particular ‘clipboard’ of the disease classification.

